

# Basic Report



**Title:** Seated Female Figurine  
**Date:** 550-830  
**Primary Maker:** Maya culture  
**Medium:** Ceramic with blue and white pigment



**Title:** Standing Man with Rattle Stick  
**Date:** 150-450  
**Primary Maker:** Veracruz, Remojadas region, Totonac  
**Medium:** Ceramic with chapopote and traces of pigment



**Title:** Effigy Head  
**Date:** n.d.  
**Primary Maker:** Dominican Republic, Taino  
**Medium:** Stone



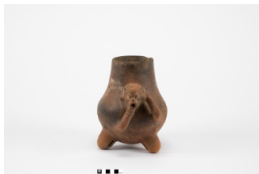
**Title:** Large male axe-head figure  
**Date:** 300 - 100 B.C.  
**Primary Maker:** Mexico, Guerrero, Mezcala  
**Medium:** Carved and polished greenstone



**Title:** Head of Ruler  
**Date:** 600-950  
**Primary Maker:** Maya culture  
**Medium:** Stucco with red pigment



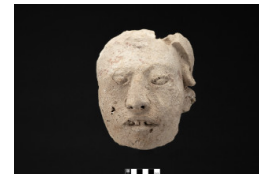
**Title:** Coiled Feathered Serpent  
**Date:** 1400 - 1520  
**Primary Maker:** Aztec culture  
**Medium:** Carved volcanic stone (tufa)



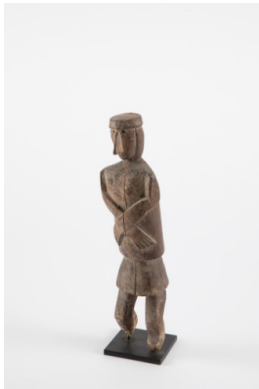
**Title:** Tripod Effigy Vase  
**Primary Maker:** Costa Rican  
**Medium:** Ceramic with pigments



**Title:** Libation Cup  
**Date:** 1200-1476  
**Primary Maker:** Chimu culture  
**Medium:** Ceramic with black slip and pigments



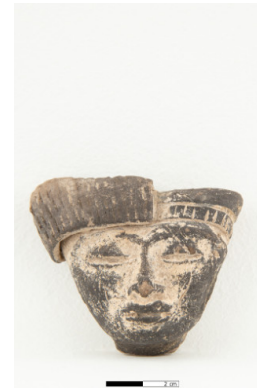
**Title:** Idealized head  
**Date:** 680 - 750  
**Primary Maker:** Maya people, Mexico, Chiapas, Palenque  
**Medium:** Stucco with red paint



**Title:** Healing figure (nuchu)  
**Date:** 20th century  
**Primary Maker:** Guna, Panama  
**Medium:** Wood, white patina



**Title:** Bowl (Copador ware?)  
**Date:** 250- 900  
**Primary Maker:** Guatemalan  
**Medium:** clay, red on orange slip



**Title:** Head  
**Date:** 350-650  
**Primary Maker:** Mexican  
**Medium:** blackware



**Title:** Head of Child  
**Date:** 600-900  
**Primary Maker:** Mexico, Central Veracruz  
**Medium:** Ceramic



**Title:** Pendant figure (penate)  
**Date:** 1200-1500  
**Primary Maker:** Mexican  
**Medium:** stone



**Title:** Pendant figure (penate)  
**Date:** 1200-1500  
**Primary Maker:** Mexican  
**Medium:** Stone



**Title:** Figure  
**Date:** 300-1 BCE  
**Primary Maker:** Mexico, Guerrero, Mezcala  
**Medium:** Greenstone



**Title:** Head  
**Date:** 250- 900  
**Primary Maker:** Mexican  
**Medium:** Ceramic



**Title:** Figure  
**Date:** 250- 900  
**Primary Maker:** Mexican  
**Medium:** Ceramic



**Title:** Pretty Woman  
**Date:** 900-500 BCE  
**Primary Maker:** Mexican  
**Medium:** brown ceramic



**Title:** Head  
**Date:** 500-100  
**Primary Maker:** Mexico,  
Central Veracruz  
**Medium:** Ceramic



**Title:** Male figure  
**Date:** 1150-900  
**Primary Maker:** Olmec  
people, Mexico  
**Medium:** Buff colored clay



**Title:** Head  
**Date:** 900-1200 CE  
**Primary Maker:** Mexico,  
Central Veracruz  
**Medium:** Orange ware  
ceramic



**Title:** Standing Female  
Figure  
**Date:** 250 BCE- 1530 CE  
**Primary Maker:** Huastec  
people (Mexico)  
**Medium:** Ceramic



**Title:** Standing Man  
Effigy Bottle  
**Date:** 200-400  
**Primary Maker:** Peru, North  
Coast, Moche  
**Medium:** Ceramic with  
white paint



**Title:** Effigy Figure  
**Date:** n.d.  
**Primary Maker:** Dominican  
Republic, Taino  
**Medium:** Coral



**Title:** Effigy Head  
**Date:** n.d.  
**Primary Maker:** Dominican  
Republic, Taino  
**Medium:** Coral



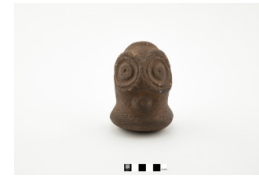
**Title:** Bust of Goddess of  
Childbirth  
**Date:** 600-900  
**Primary Maker:** Totonac  
people  
**Medium:** Ceramic



**Title:** Standing Female Figure  
**Date:** 1000-1550  
**Primary Maker:** E. Costa Rica, Atlantic Watershed, Linea Vieja  
**Medium:** Carved basalt lava



**Title:** Effigy Head  
**Date:** n.d.  
**Primary Maker:** Dominican Republic, Taino  
**Medium:** Stone



**Title:** Effigy Head  
**Date:** n.d.  
**Primary Maker:** Dominican Republic, Taino  
**Medium:** Stone



**Title:** Effigy Head  
**Date:** n.d.  
**Primary Maker:** Dominican Republic, Taino  
**Medium:** Stone



**Title:** Effigy Head  
**Date:** n.d.  
**Primary Maker:** Dominican Republic, Taino  
**Medium:** Stone



**Title:** Effigy Head  
**Date:** n.d.  
**Primary Maker:** Dominican Republic, Taino  
**Medium:** Coral



**Title:** Effigy Head  
**Date:** n.d.  
**Primary Maker:** Dominican Republic, Taino  
**Medium:** Coral



**Title:** Effigy Head  
**Date:** n.d.  
**Primary Maker:** Dominican Republic, Taino  
**Medium:** Coral



**Title:** Effigy Head  
**Date:** n.d.  
**Primary Maker:** Dominican Republic, Taino  
**Medium:** Coral





**Title:** Effigy Figure  
**Date:** n.d.  
**Primary Maker:** Dominican Republic, Taino  
**Medium:** Stone



**Title:** Effigy Head  
**Date:** n.d.  
**Primary Maker:** Dominican Republic, Taino  
**Medium:** Coral



**Title:** Effigy Figure  
**Date:** n.d.  
**Primary Maker:** Dominican Republic, Taino  
**Medium:** Stone



**Title:** Effigy Figure  
**Date:** n.d.  
**Primary Maker:** Dominican Republic, Taino  
**Medium:** Stone



**Title:** Effigy Head  
**Date:** n.d.  
**Primary Maker:** Dominican Republic, Taino  
**Medium:** Stone



**Title:** Effigy Head  
**Date:** n.d.  
**Primary Maker:** Dominican Republic, Taino  
**Medium:** Stone



**Title:** Effigy Head  
**Date:** n.d.  
**Primary Maker:** Dominican Republic, Taino  
**Medium:** Stone



**Title:** Effigy Figure  
**Date:** n.d.  
**Primary Maker:** Dominican Republic, Taino  
**Medium:** Stone



**Title:** Effigy Figure  
**Date:** n.d.  
**Primary Maker:** Dominican Republic, Taino  
**Medium:** Stone



**Title:** Effigy Head  
**Date:** n.d.  
**Primary Maker:** Dominican Republic, Taino  
**Medium:** Stone



**Title:** Effigy Figure  
**Date:** n.d.  
**Primary Maker:** Dominican Republic, Taino  
**Medium:** Stone



**Title:** Roof pinnacle with figures  
**Primary Maker:** Mexican  
**Medium:** Metal, painted black



**Title:** Roof pinnacle with birds  
**Primary Maker:** Mexican  
**Medium:** Metal, painted black



**Title:** Vessel  
**Date:** 550 - 950  
**Primary Maker:** Veracruz  
**Medium:** Grey stone



**Title:** Notched hacha of divine head  
**Date:** 450-750  
**Primary Maker:** Totonac people  
**Medium:** Carved basalt



**Title:** Effigy Figure  
**Date:** n.d.  
**Primary Maker:** Dominican Republic, Taino  
**Medium:** Coral



**Title:** Effigy Figure  
**Date:** n.d.  
**Primary Maker:** Dominican Republic, Taino  
**Medium:** Stone



**Title:** Palma of elongated feathered bust  
**Date:** 750 - 1000  
**Primary Maker:** El Tajin culture, Mexico, Central Veracruz  
**Medium:** Carved volcanic stone (tufa)



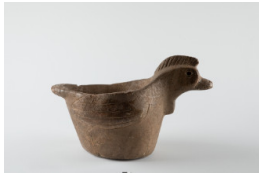
**Title:** Large Face Mask  
**Date:** 1200-1450  
**Primary Maker:** Tennessee, Rhea County, Mississippian  
**Medium:** Carved sandstone (dolomite), paint



**Title:** Glyph Panel  
**Date:** 700-850  
**Primary Maker:** Maya culture  
**Medium:** Limestone



**Title:** Seated Male Figure  
**Date:** 1000-300 BCE  
**Primary Maker:** Olmec people, Mexico  
**Medium:** Limestone, traces of pigment



**Title:** Duck Effigy Bowl  
**Date:** 1000 - 1300  
**Primary Maker:** Georgia, Floyd County, Mississippian  
**Medium:** Carved stone



**Title:** Stone Head  
**Date:** 600-950  
**Primary Maker:** Maya culture  
**Medium:** Limestone



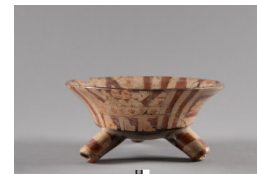
**Title:** Stone celt  
**Date:** 600-900  
**Primary Maker:** Maya culture  
**Medium:** Jadeite



**Title:** Small female axe-head figure  
**Date:** 100 B.C. - 200  
**Primary Maker:** Mexico, Guerrero, Mezcala  
**Medium:** Carved and polished greenstone



**Title:** Standing female figure  
**Date:** 300 - 700  
**Primary Maker:** Chontal Maya people, Mexico, Guerrero  
**Medium:** Greenstone



**Title:** Tripod bowl  
**Date:** 900 - 1500  
**Primary Maker:** Mexico, Michoacan  
**Medium:** Ceramic with pigments



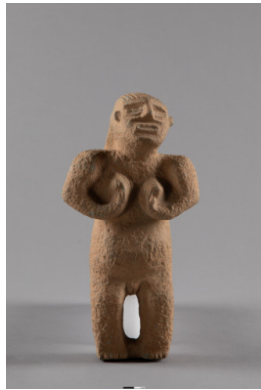
**Title:** Pendant of Bird-Man God  
**Date:** 300 BCE-700 CE  
**Primary Maker:** Costa Rica, Central Highlands  
**Medium:** Carved and polished greenstone



**Title:** Ornamental Pendant  
**Date:** 300-700  
**Primary Maker:** Costa Rica, Nicoya Zone  
**Medium:** Alabaster (calcite)



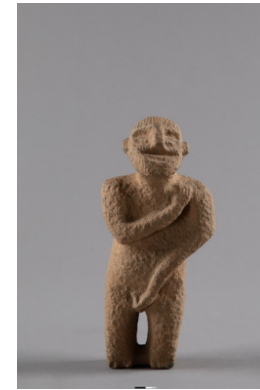
**Title:** Incised Stone  
**Date:** n.d.  
**Primary Maker:** Costa Rican  
**Medium:** Stone



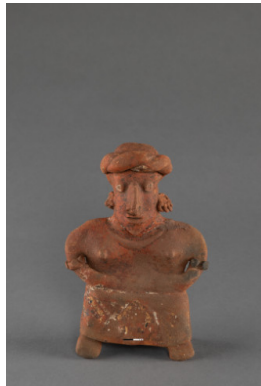
**Title:** Female Figure  
**Date:** 1000-1522  
**Primary Maker:** Costa Rican  
**Medium:** Carved grey stone with pale red-brown incrustation



**Title:** Male Figure  
**Date:** n.d.  
**Primary Maker:** Costa Rican  
**Medium:** Carved grey stone with pale red-brown incrustation (clay?)



**Title:** Male Figure  
**Date:** 1000-1522  
**Primary Maker:** Costa Rican  
**Medium:** Carved grey stone with pale red-brown incrustation



**Title:** Female Figure  
**Date:** n.d.  
**Primary Maker:** West Mexico  
**Medium:** Ceramic with pigment



**Title:** Overhead Mask of Jaguar  
**Date:** 550-750  
**Primary Maker:** Nahuatl culture  
**Medium:** Red painted ceramic



**Title:** Human-head mace head  
**Date:** 300-500  
**Primary Maker:** Costa Rica, Caribbean Watershed  
**Medium:** Stone





**Title: Quero (Beaker)  
with Hunting Scene**

**Date:** c. 1600-1900

**Primary Maker:** Quechua  
Culture

**Medium:** Wood with  
pigments



**Title: Head**

**Date:** 450-750

**Primary Maker:** Guatemalan

**Medium:** Ceramic